

# hp-Overflow valves with thread connection

2.1

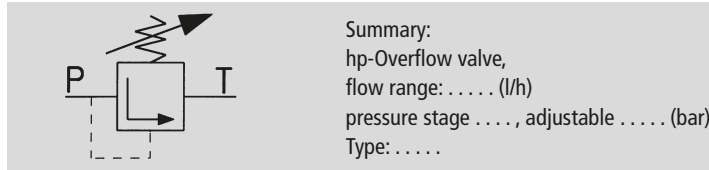
## Type of actuation E: with adjustment screw

For lubricating and hydraulic oils and many other self-lubricating non-corrosive fluids. For heating oils EL, L, M, S and ES, coal tar oils, kerosene.

Maximum temperature of fluid medium: 150 °C.

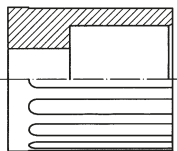
Material: casing of hydraulic cast iron (GGG 40); certificate 3.1 on request; piston, valve tip, spring of hardened steel.

Function: Directly-controlled, spring-loaded overflow valve for maintaining a set operating pressure or a set maximum pressure in a pressure pipe.



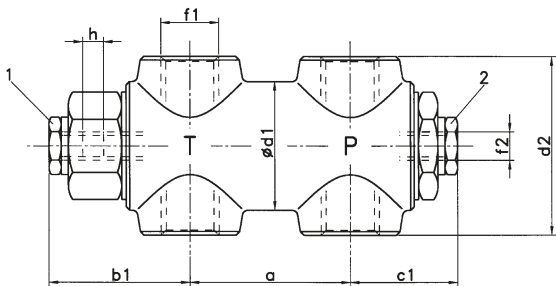
Model	Possible pressure stages for each model	Connection thread <sup>2)</sup>	Flow range <sup>3)</sup> l/h	Viscosity range cSt	Item No.
B - P - E / _ G 1/4" <sup>1)</sup>		G 1/4"	6 - 120	2.8 to 480	0210000
B - P - E / _	0 = 0.5 - 1.5 bar	G 3/8"	15 - 160	2.8 to 480	0210002
B - G - E / _	1 = 1 - 4 bar	G 1/2"	30 - 600	2.8 to 480	0210003
B - GH - E / _ <sup>4)</sup>	2 = 2 - 9 bar	G 3/4"	100 - 2000	2.8 to 480	0210004
B - GHG - E / _	3 = 6 - 25 bar	G 1"	300 - 6000	2.8 to 480	0210005
B - GHG - E / _ G 1 1/4"	4 = 15 - 40 bar	G 1 1/4"	500 - 10000	2.8 to 480	0210006

<sup>1)</sup> Not pressure stage 0  
<sup>2)</sup> Pipe thread G...A DIN ISO 228-1  
<sup>3)</sup> For curve see page 31  
<sup>4)</sup> Not pressure stage 0, for pressure stage 1: 0.5 - 3.5 bar, all further pressure stages according to table



For very dirty heavy oils, the overflow valves may be fitted or retrofitted with a piston axial nut (heavy oil piston) at an additional cost.

Model	Item No.	Ø for piston and hole
BP	0840750	20/2.5
BG/FDR 15	0840752	20/5.0
BG/FDR 15	0840754	20/7.5
BGH/FDR 20	0840756	30/10
BGHG 1"/FDR 25	0840758	35/15
BGHG 1 1/4"/FDR 32	0840760	35/25
FDR 50	0840762	50/30



**Model with regulating screw**  
 After removing cover screw 1 on the regulating screw, the pressure is increased by turning clockwise with a screwdriver or with an allen key. It is decreased by turning counterclockwise.

## Size table

Model	a	b1	c1	d1	d2	f1	max. pipe	NW	f2	Adjustment path h at pressure stage			
										0 + 1	2	3	4
P - 1/4"	55	65	37	36	52	G 1/4"	10 x 1	8	G 1/8"	15	12	8	7
P	55	65	37	36	52	G 3/8"	12 x 1	10	G 1/8"	15	12	8	7
G	55	65	37	36	52	G 1/2"	18 x 1.5	15	G 1/8"	15	12	8	7
GH	63	65	43	50	70	G 3/4"	22 x 1.5	20	G 1/4"	15	10	8	5
GHG	80	62.5	56	56	86	G 1"	28 x 1.5	25	G 1/4"	20	17	9	6
GHG - 1 1/4"	80	62.5	56	56	86	G 1 1/4"	35 x 2	30	G 1/4"	20	17	9	6

For installation, operation and maintenance, follow the operating instructions that come with each piece of equipment.

Pumps and Valves  
 Motor pump groups  
 Units for single-pipe installation  
 Feed pumps and Pressure aggregates  
 Oil burner pressure aggregates  
 Filters  
 Pump controls  
 Accessories and Spare parts  
 Nozzles  
 Special units and Application  
 General